



# CXone Mpower EXPERT

## 无法拆分或移动克隆卷

[https://kb-cn-stage.netapp.com/on-prem/ontap/Ontap\\_OS/OS-KBs/Unable\\_to\\_split\\_or\\_move\\_clone\\_vo...](https://kb-cn-stage.netapp.com/on-prem/ontap/Ontap_OS/OS-KBs/Unable_to_split_or_move_clone_vo...)

Updated: Wed, 22 Apr 2026 09:37:34 GMT

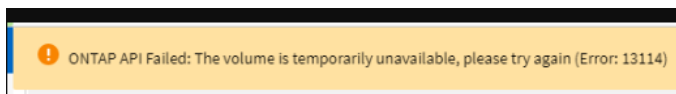
### 适用场景

- ONTAP 9
- 克隆卷拆分
- 克隆卷移动

### 问题描述

- 克隆拆分失败、并显示错误：

ONTAP API Failed: The volume is temporarily unavailable, please try again (Error: 13114)



'NetApp provides no representations or warranties regarding the accuracy or reliability or serviceability of any information or recommendations provided in this publication or with respect to any results that may be obtained by the use of the information or observance of any recommendations provided herein. The information in this document is distributed AS IS and the use of this information or the implementation of any recommendations or techniques herein is a customers responsibility and depends on the customers ability to evaluate and integrate them into the customers operational environment. This document and the information

```
CLUSTER-01::> vol clone split show
Blocks
-----
Vserver  FlexClone    Scanned Updated  % Complete
-----
vserv01  clone_volume_01 15857827  0      98
```

- 没有失败或成功的克隆拆分作业：

```
CLUSTER-01::> vol clone split show
This table is currently empty.
```

- 没有失败或成功的卷移动作业：

```
CLUSTER-01::> vol move show
This table is currently empty.
```