

# CXone Mpower EXPERT

## 节点重新启动后，Flash Cache 故障 LED 亮起

[https://kb-cn-stage.netapp.com/on-prem/ontap/OHW/OHW-KBs/Flash\\_Cache\\_Fault\\_LED\\_ON\\_after\\_n...](https://kb-cn-stage.netapp.com/on-prem/ontap/OHW/OHW-KBs/Flash_Cache_Fault_LED_ON_after_n...)

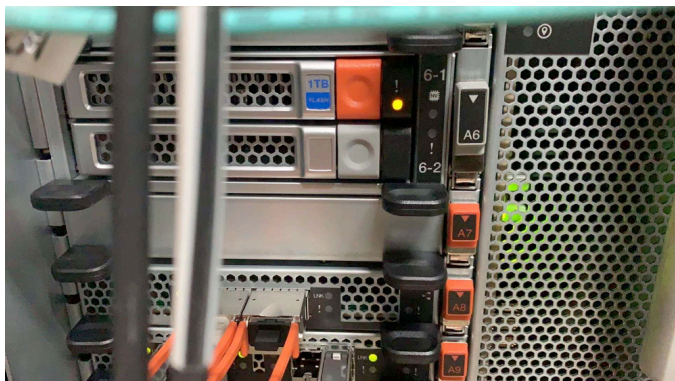
Updated: Wed, 22 Apr 2026 13:03:15 GMT

### 适用场景

FAS9000

### 问题描述

- 插槽6-1上的Flash Cache故障LED亮起、但在节点重新启动后未显示任何错误。



'NetApp provides no representations or warranties regarding the accuracy or reliability or serviceability of any information or recommendations provided in this publication or with respect to any results that may be obtained by the use of the information or observance of any recommendations provided herein. The information in this document is distributed AS IS and the use of this information or the implementation of any recommendations or techniques herein is a customers responsibility and depends on the customers ability to evaluate and integrate them into the customers operational environment. This document and the information

- SP事件日志：

Record 1427: Tue Sep 21 03:08:49.829009 2021 [IPMI.notice]: ee04 | 02 | EVT:  
6f02ffff | SFM61\_Status | Assertion Event, "Fault"

Record 1428: Tue Sep 21 03:10:01.025981 2021 [IPMI.notice]: ef04 | 02 | EVT:  
0301ffff | Attn\_Sensor1 | Assertion Event, "State Asserted"

Record 1429: Tue Sep 21 03:10:52.408070 2021 [IPMI.notice]: f004 | 02 | EVT:  
0300ffff | Attn\_Sensor1 | Assertion Event, "State Deasserted"